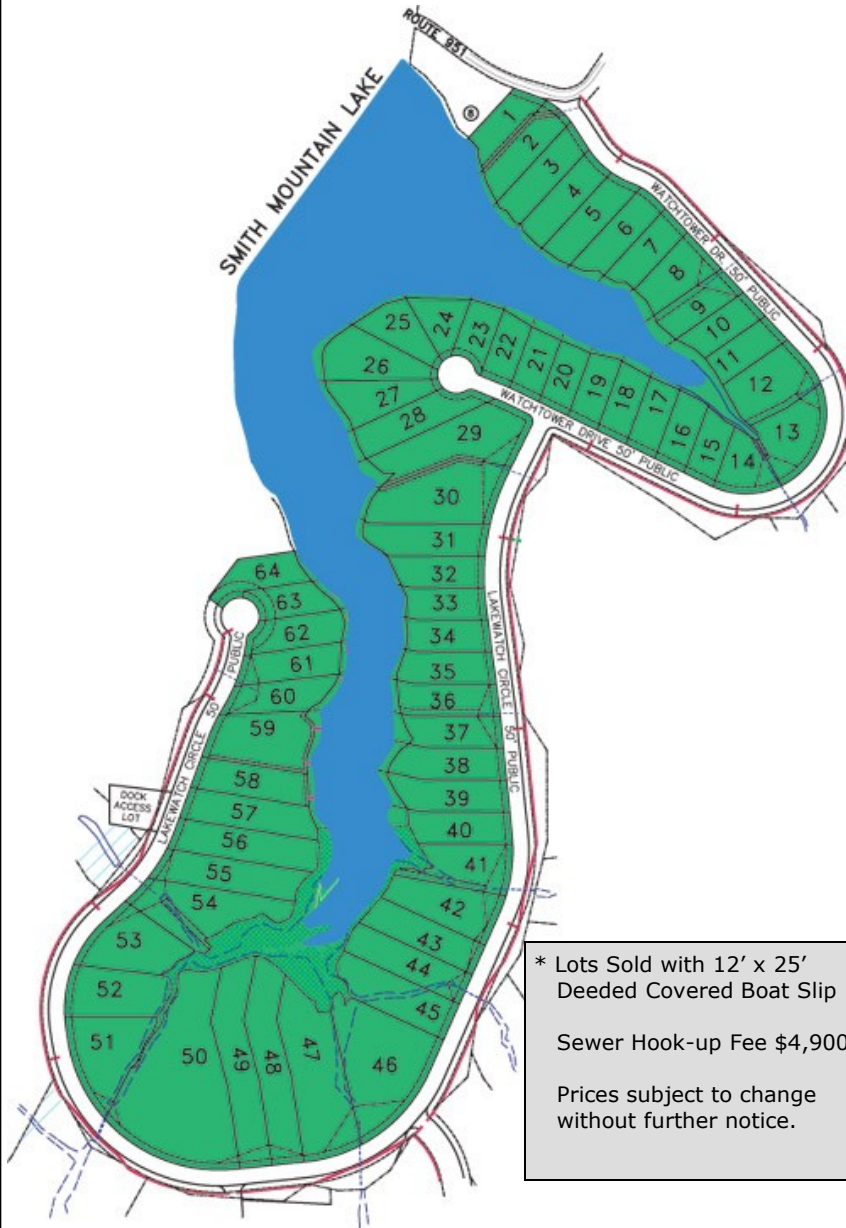


LakeWatch PLANTATION

The Waterfront Lots



LOT NO.	LAKE FRONTAGE	LIST PRICE	SLIP
9	101"	\$425,000 NOW \$299,000	
10	108'	\$315,000	*
11	96'	\$295,000	*
12	153'	\$259,000	*
13	60'	\$219,000	*
14	80'	\$219,000	*
15	105'	\$249,000	*
16	101'	\$289,000	*
17	101'	\$399,000 NOW \$249,000	
18	101'	\$399,000	
25	188'	\$559,000	
26	220'	\$649,000 NOW \$425,000	
32	108'	\$599,000 NOW \$325,000	
41	233'	\$349,000	*
42	81'	\$349,000	*
43	104'	\$319,000	*
44	100'	\$289,000 NOW \$189,000	*
45	173'	\$219,000	*
46	158'	\$209,000	*
47	204'	\$239,000 NOW \$179,000	*
48	107'	\$259,000	*
49	115'	\$249,000	*
50	479'	\$229,000	*
51	190'	\$209,000	*
52	166'	\$209,000	*
53	130'	\$219,000	*
54	455'	\$269,000	*
55	108'	\$319,000	*
56	100'	\$349,000 NOW \$189,000	*
57	110'	\$349,000	*
58	109'	\$509,000	*
59	212'	\$489,000	*
60	154'	\$399,000	
63	126'	\$399,000 NOW \$249,000	
64	108'	\$399,000 NOW \$299,000	

Trey Park (Owner/REALTOR ®) (540) 420-3383
 trey@lakewatchplantation.com
 www.parkatthelake.com

RE/MAX
Lakefront Realty Inc.

Information deemed reliable but is not warranted.
 Revised March 2010

